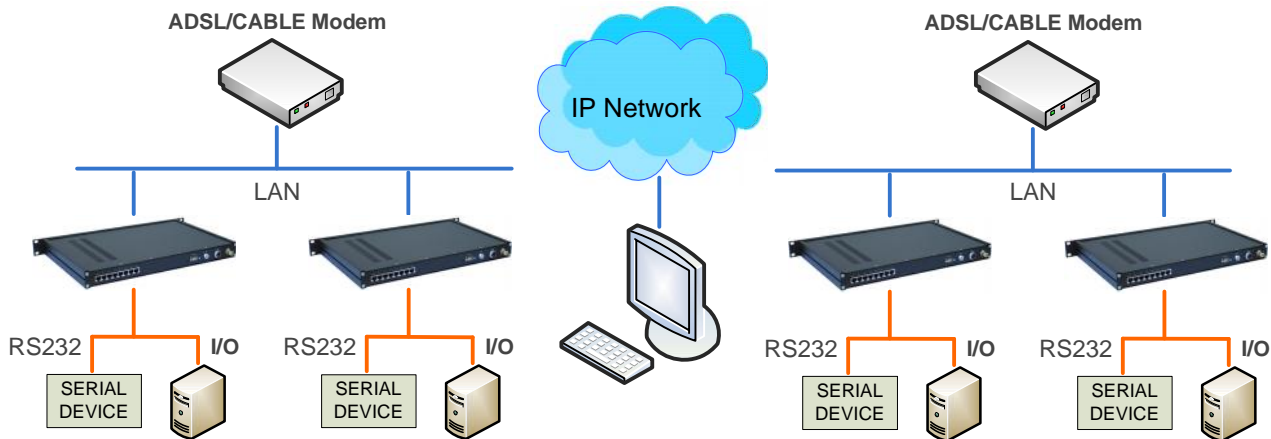


## Industrial Serial RS 422 to Ethernet Converter

The industrial Single port RS422 serial device server

### Features

- DHCP Client
- PPPoE Over Ethernet
- Dynamic DNS
- TCP/UDP server/client support
- Backup and Restore configuration
- Full Network Management via Web
- Auto-negotiating 10/ 100M bps Ethernet



### Overview

TERRATEL RS422 to Ethernet Converter is a low cost industrial Single port RS422 serial device server that can make your industrial serial devices to be IP / Ethernet network enabled. Configuration and firmware upgrade are available using the network. PPPoE & DDNS protocol makes the user connect to Internet without static IP.

TERRATEL RS422 to Ethernet Converter is easy to configure using a simple page configuration page. The terminal block on the TERRATEL RS422 to Ethernet Converter is used for power connection and/or RS422 operation. The RS232 connection is a standard DB9 male.

The power connection (9-30VDC) can be made using the INCLUDED wall supply with barrel plug. LEDs are provided for power, serial transmission and Ethernet activity.