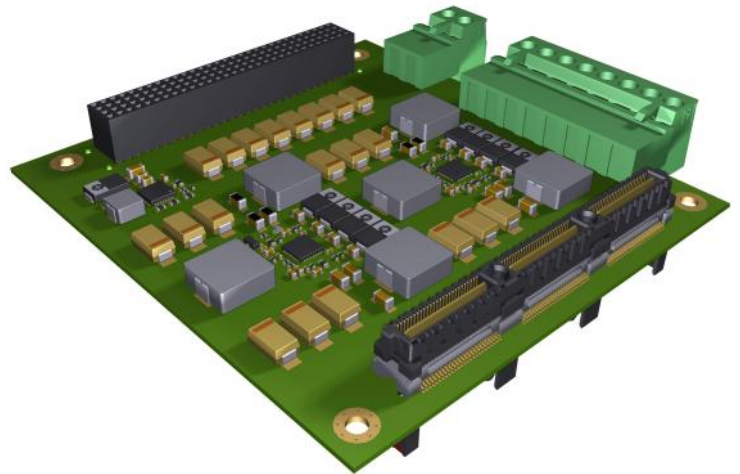


### Features

- Wide input voltage range 8-32 V DC (max 36 V)
- No heat sink required with natural convection cooling up to 45 °C
- 83 W total output power guaranteed with adequate cooling
- Up to 91 % efficiency at full load
- Synchronized supplies reduce switching stresses
- Remote ON/OFF operation
- Operating temperature range -40 °C to +85 °C
- Fully PC/104-EXPRESS compliant



### Output voltage ripple at full load

- +5 V STDBY 15.0 mV
- +3.3 V 20.2 mV
- +12 V 20.6 mV
- -12 V 12.6 mV

### Output voltage regulation

- $\pm 5\%$  (max)

### Output Power (88W total)

- +5V@10A for 50 W
- +5V STDBY@ 1A for 5 W
- +3.3V@10A for 33 W
- +12V@2.0A for 24 W
- -12V@500mA for 6 W
- 88 W available

### Host interface

- PC/104-Express busses with +5 V, +5VSTDBY, +3.3 V, +12 V, -12 V

### Efficiencies

- 5 V efficiency 91 %
- 5 V STDBY efficiency 82 %
- 3.3 V efficiency 89 %
- +12 V efficiency 90 %
- -12 V efficiency 88 %
- Overall 85 %

### Maximum Board Power dissipation

- 15.53 Watts